

**1996** The Health Commission established Health Plan of San Joaquin (HPSJ) as a local Medi-Cal managed care plan to meet the unique health care needs in San Joaquin County.

**2013** DHCS selected HPSJ to serve Stanislaus County, increasing Member access to a larger, combined provider network.

**2024** The Health Commission expanded to serve Alpine and El Dorado counties as Mountain Valley Health Plan (MVHP). This aligns with the mission of public health plan models (called local initiatives) to collaborate with safety net providers, non-profit organizations, and members of the public to provide access to community-led health care.

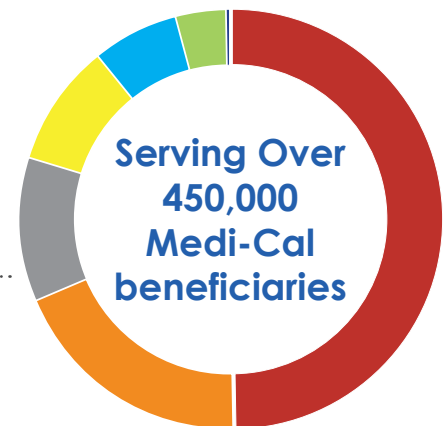
**VISION**

Healthy communities with equitable access to quality care

**MISSION**

Provide access to high quality health care for our members through community partnerships

- Hispanic **49.7%**
- Caucasian **18.9%**
- Unknown **11.3%**
- Asian **9.3%**
- Black **6.8%**
- Native Hawaiian or Other Pacific Islander **3.7%**
- American Indian or Alaska Native **0.2%**
- Other **0.001%**



Elderly, Blind and Disabled: **6%**  
Children and Families: **59%**

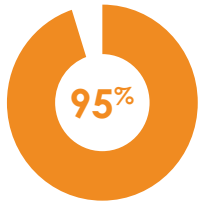
Young Adults: **28%**  
Medi-Cal/Medicare Dual Eligibles: **7%**

## LOCAL GOVERNANCE

**Health Commission:** HPSJ and MVHP are public health plans governed by 13 local leaders from the communities we serve.

**Community Advisory Committee:** The direction of HPSJ/MVHP is informed by a committee of members who are invested in improving health for their family, neighbors, and the broader community.

## INVESTMENTS IN EQUITABLE ACCESS TO CARE

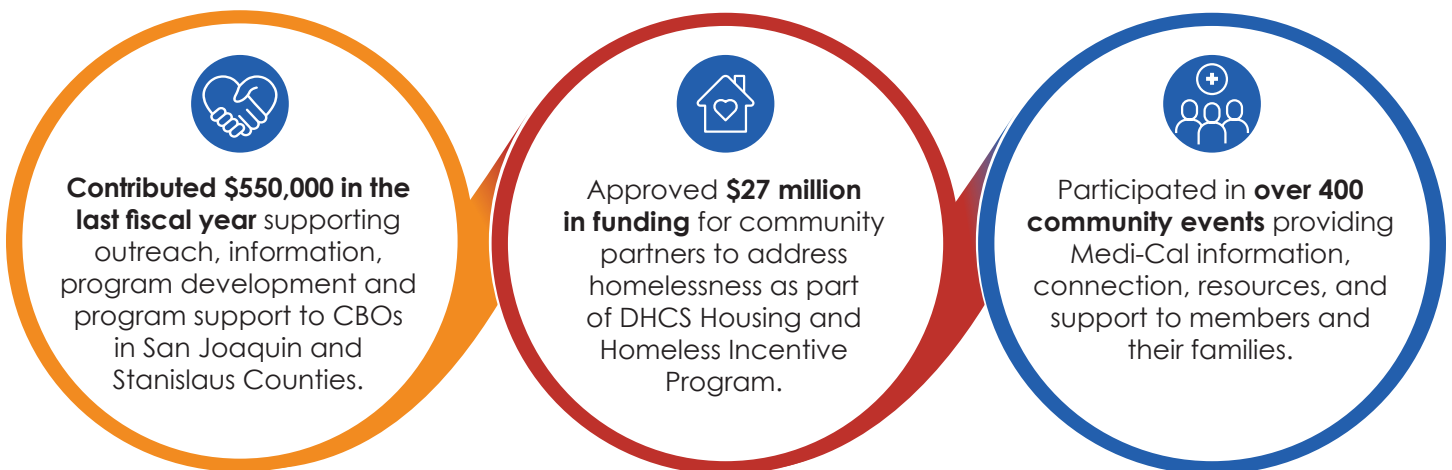


95% of every dollar of revenue earned is reinvested in the community, used to grow the local network of safety net health care providers, and support local strategies for improved health.



## COMMUNITY WELLNESS

As a mission-driven, nonprofit health plan, HPSJ/MVHP devotes resources to local community partners and organizations dedicated to improving the health of the community.



## STRATEGIC PRIORITIES 2023-2026

### OPERATIONAL EXCELLENCE AND GROWTH

Enhance and Standardize Operational Capabilities

### COMMUNITY PARTNERSHIPS

Deepen and Expand Community Presence to Address Delivery System

### SKILLED AND STABLE WORKFORCE

Become Employer of Choice for High-Performing, Engaged Workforce

### FINANCIAL STEWARDSHIP

Invest in the Future of Delivery System

View our full 2023-2026 Strategic Plan online at [www.hpsj.com/about-us](http://www.hpsj.com/about-us)